

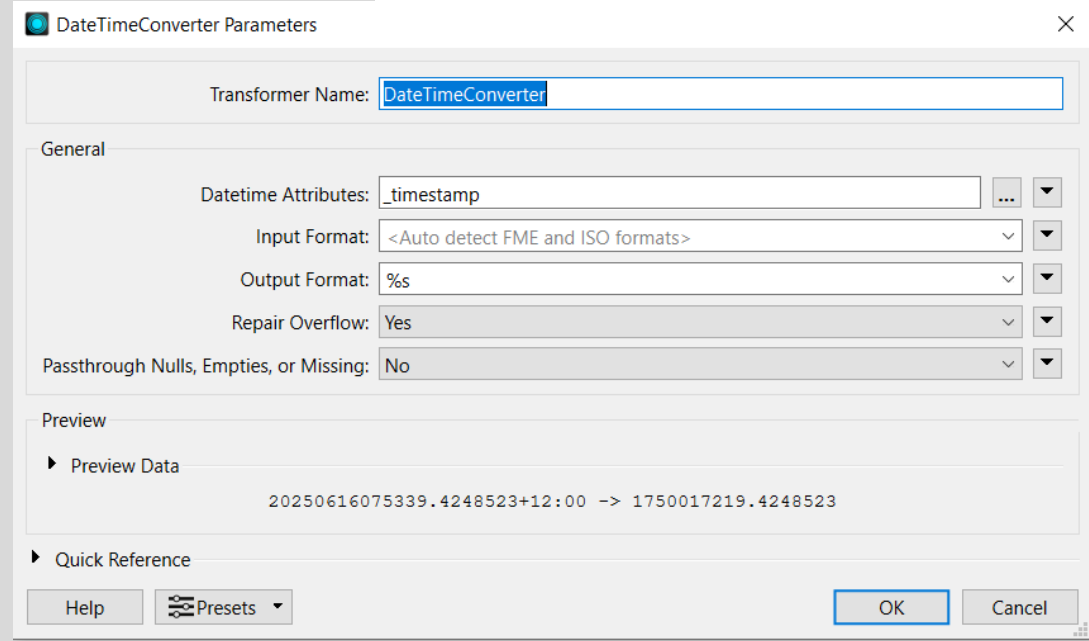
FME Form Tips and Tricks

Photo by [Google DeepMind](#) on [Unsplash](#)

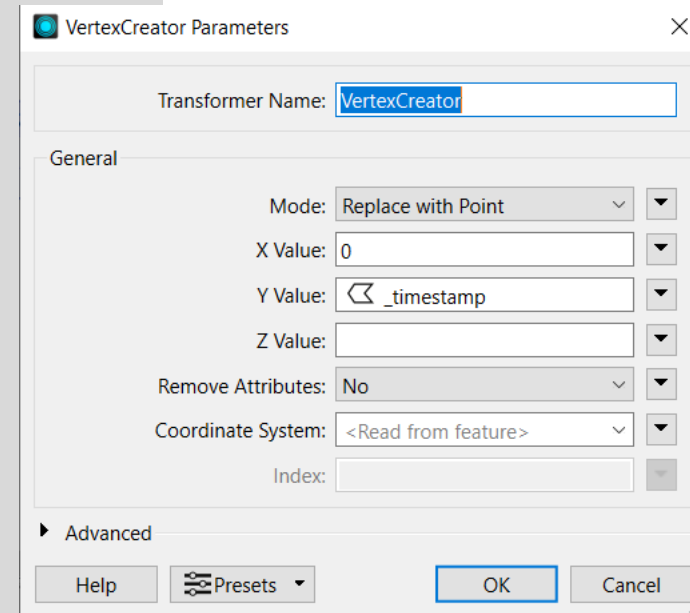


Time as Spatial

- Formatted time interaction is hard
- Epoch is seconds since 1/1/1970...consecutive numbering (e.g. 1750017219)
- DateTimeConverter: %s or %Es depending on timezone inclusion
- Convert to geometry and you can perform spatial queries



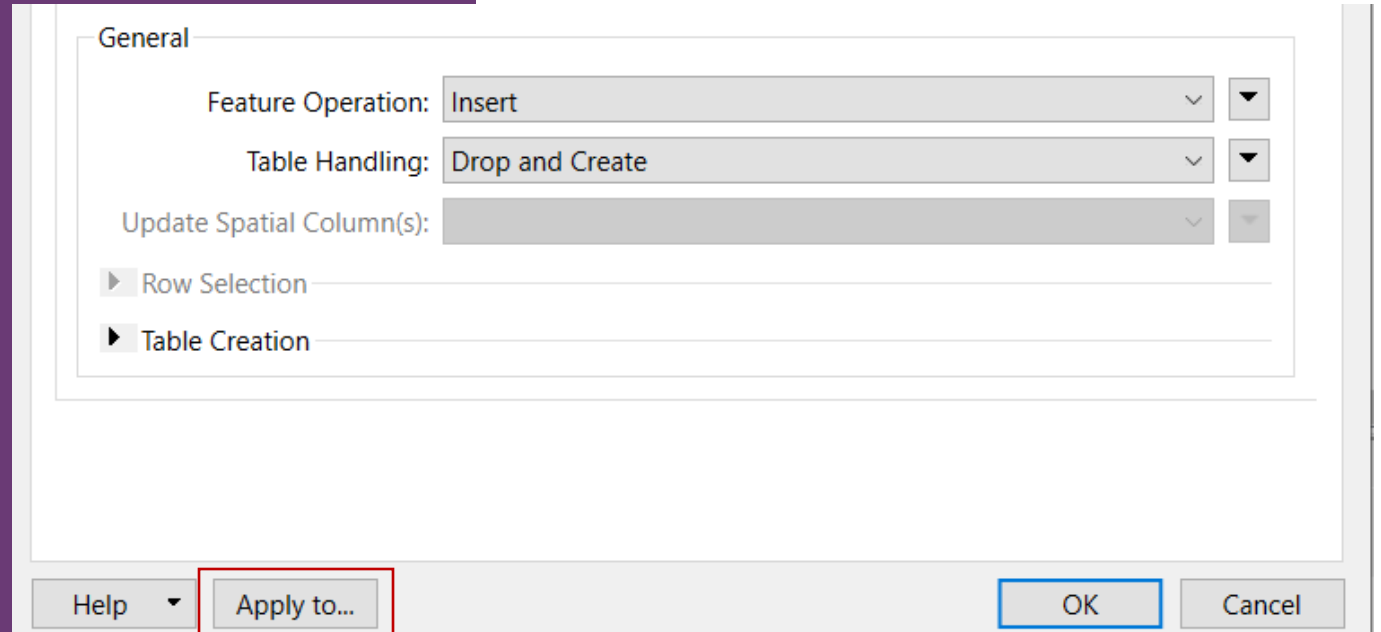
The DateTimeConverter Parameters dialog box is shown. It has a title bar with a close button. The 'Transformer Name' field is set to 'DateTimeConverter'. The 'General' section contains the following settings: 'Datetime Attributes' is '_timestamp', 'Input Format' is '<Auto detect FME and ISO formats>', 'Output Format' is '%s', 'Repair Overflow' is 'Yes', and 'Passthrough Nulls, Empties, or Missing' is 'No'. The 'Preview' section shows a 'Preview Data' button and a preview of the conversion: '20250616075339.4248523+12:00 -> 1750017219.4248523'. The 'Quick Reference' section is empty. At the bottom are 'Help', 'Presets', 'OK', and 'Cancel' buttons.



The VertexCreator Parameters dialog box is shown. It has a title bar with a close button. The 'Transformer Name' field is set to 'VertexCreator'. The 'General' section contains the following settings: 'Mode' is 'Replace with Point', 'X Value' is '0', 'Y Value' is '_timestamp', 'Z Value' is empty, 'Remove Attributes' is 'No', 'Coordinate System' is '<Read from feature>', and 'Index' is empty. The 'Advanced' section is collapsed. At the bottom are 'Help', 'Presets', 'OK', and 'Cancel' buttons.

Updates to Feature Types

- Ability to make changes in bulk against Reader or Writer Feature Types
- Works across different Readers and Writers in the workspace



Start x Main x

Layer1
<spatial>

Layer2
<spatial>

Layer3
<spatial>

Layer4
<spatial>

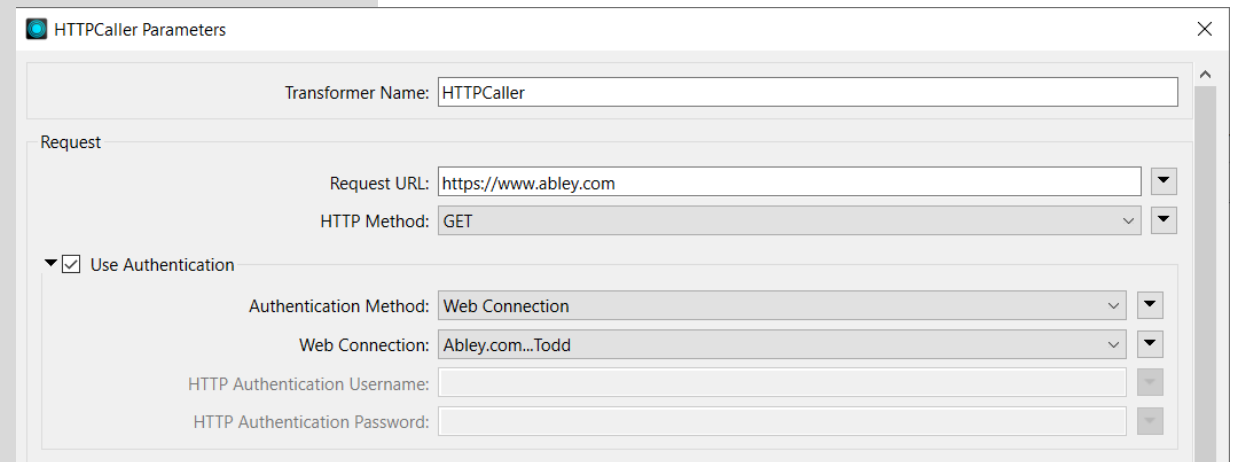
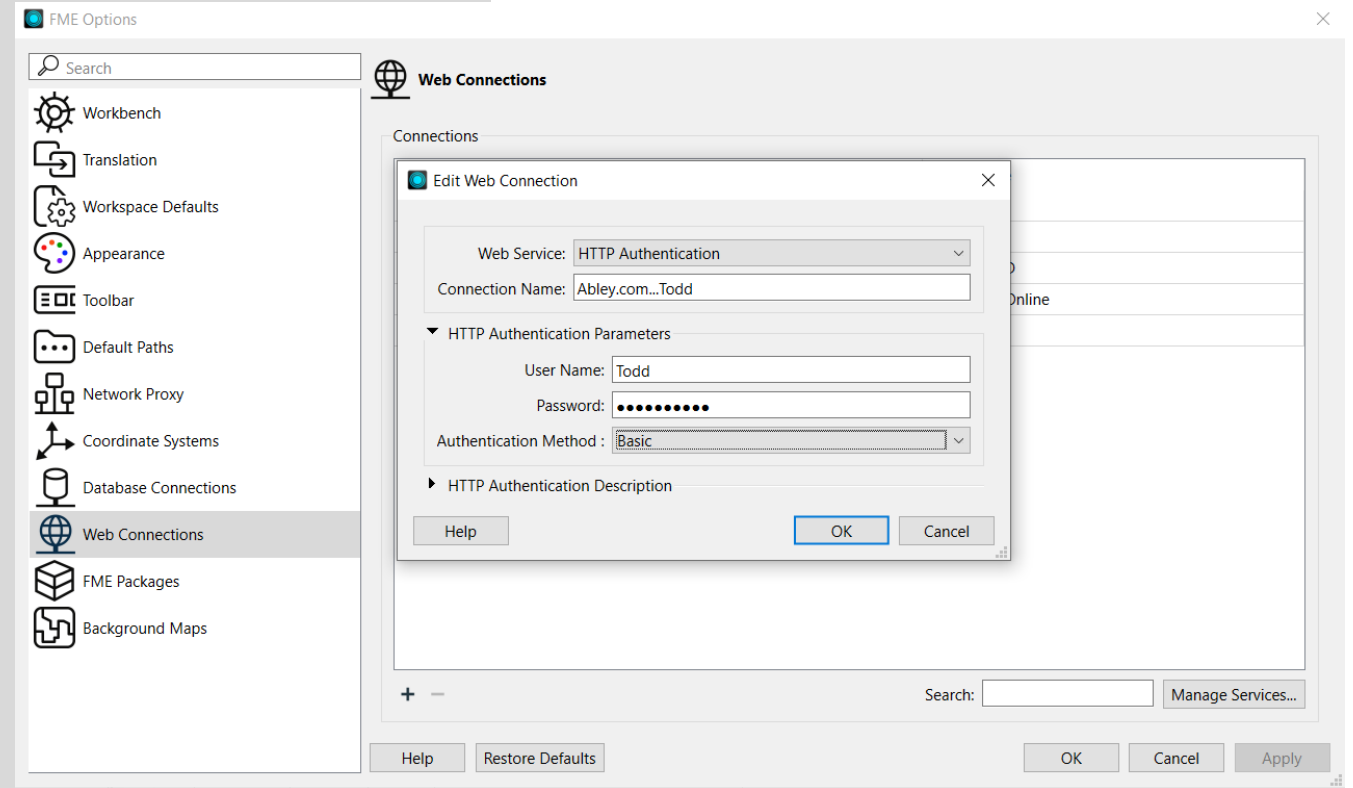
Visual Preview Translation Log x

0 Errors 0 Warnings Information

	Timestamp	CPU	Elapsed	Transformer	Message
31	08:09:46	0.1	0.0		Opened mapping File C:\fme_temp\FME_1750018184409_20200.fmw for output
32	08:09:46	0.2	0.1		Mapping File Generation was SUCCESSFUL
33	08:09:46	0.2	0.0		FME Session Duration: 0.9 seconds. (CPU: 0.1s user, 0.1s system)
34	08:09:46	0.2	0.0		END - ProcessID: 20600, peak process memory usage: 49300 kB, current process memory usage:
35	08:09:46				Mapping File Generation was SUCCESSFUL

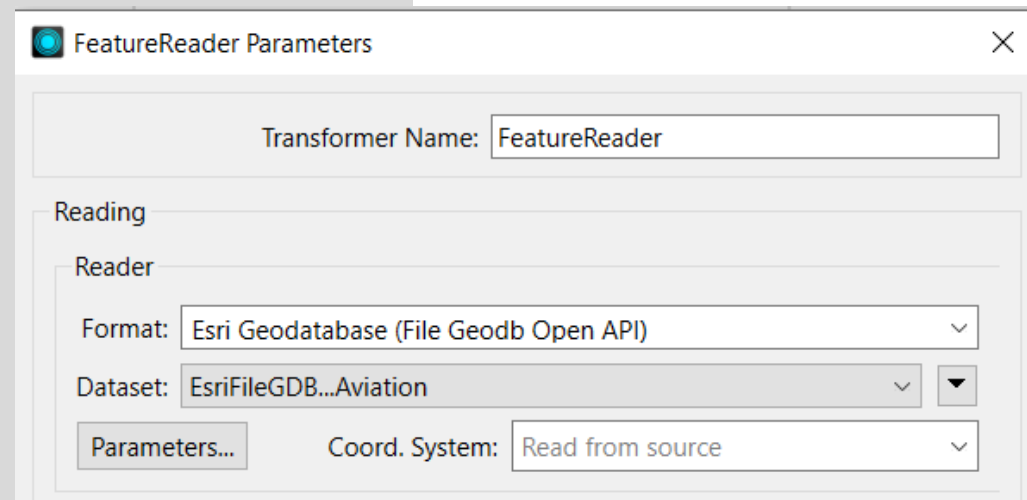
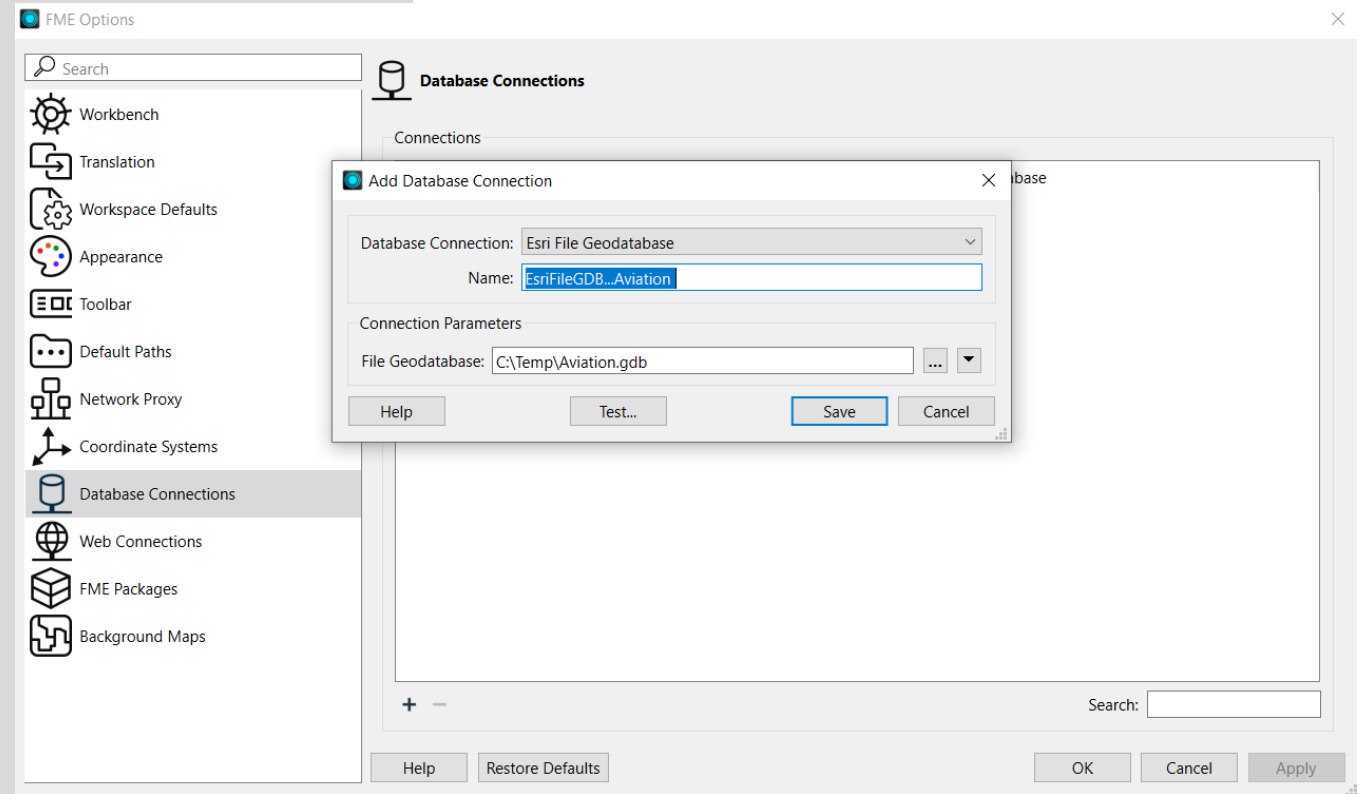
Make Better Connections

- Store “Basic” Usernames and Passwords as Connections
- Better Protection
- Easier to Access and Share



Make Better Connections...

- Look through Web Connections and Database Connections. You can store a lot.
- Create Connections to databases that are used often, including file-based formats



Schema Mapping

- Hard to get your head around
- Takes hardcoding out of FME Workspace
- Extremely Powerful and now with FME Expressions

	A	B	C	D	E	F	G	H	I	J	K	L
1	SourceField	SourceValue	SourceField2	SourceValue2	DestinationField	DestinationValue	DestinationField2	DestinationValue2	DestinationField3	DestinationValue3		
2	Type	Park	GrassPercentage	fmeexpression=@Evaluate(@Value(GrassPercentage) > 80)	ParkType	Fields	Department	City Grass	GrassHA	fmeexpression=@Evaluate(@		
3	Type	Park	GrassPercentage	fmeexpression=@Evaluate(@Value(GrassPercentage) < 10)	ParkType	Forrest	Department	City Trees	ForrestHA	fmeexpression=@Evaluate(@		
4												
5												

File **Home** Insert Draw Page Layout Formulas Data Review View Automate Help

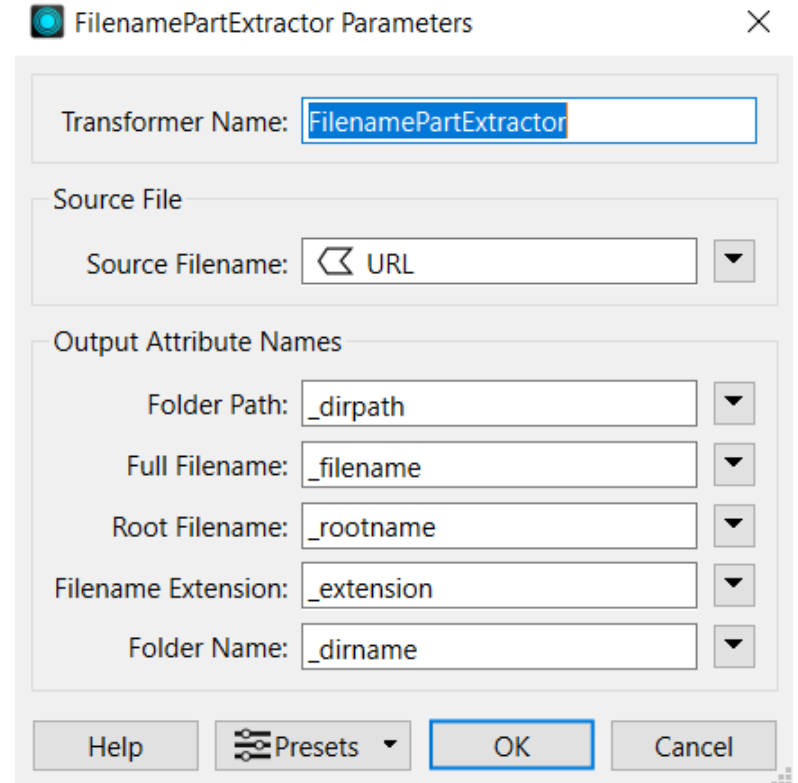
M15     f_x 

[illegible]

FileNamePartExtractor

- Not just for Files
- Useful for URLs
- Split

fme.abley.com/ArcGIS/CurrentLicenceUse.docx

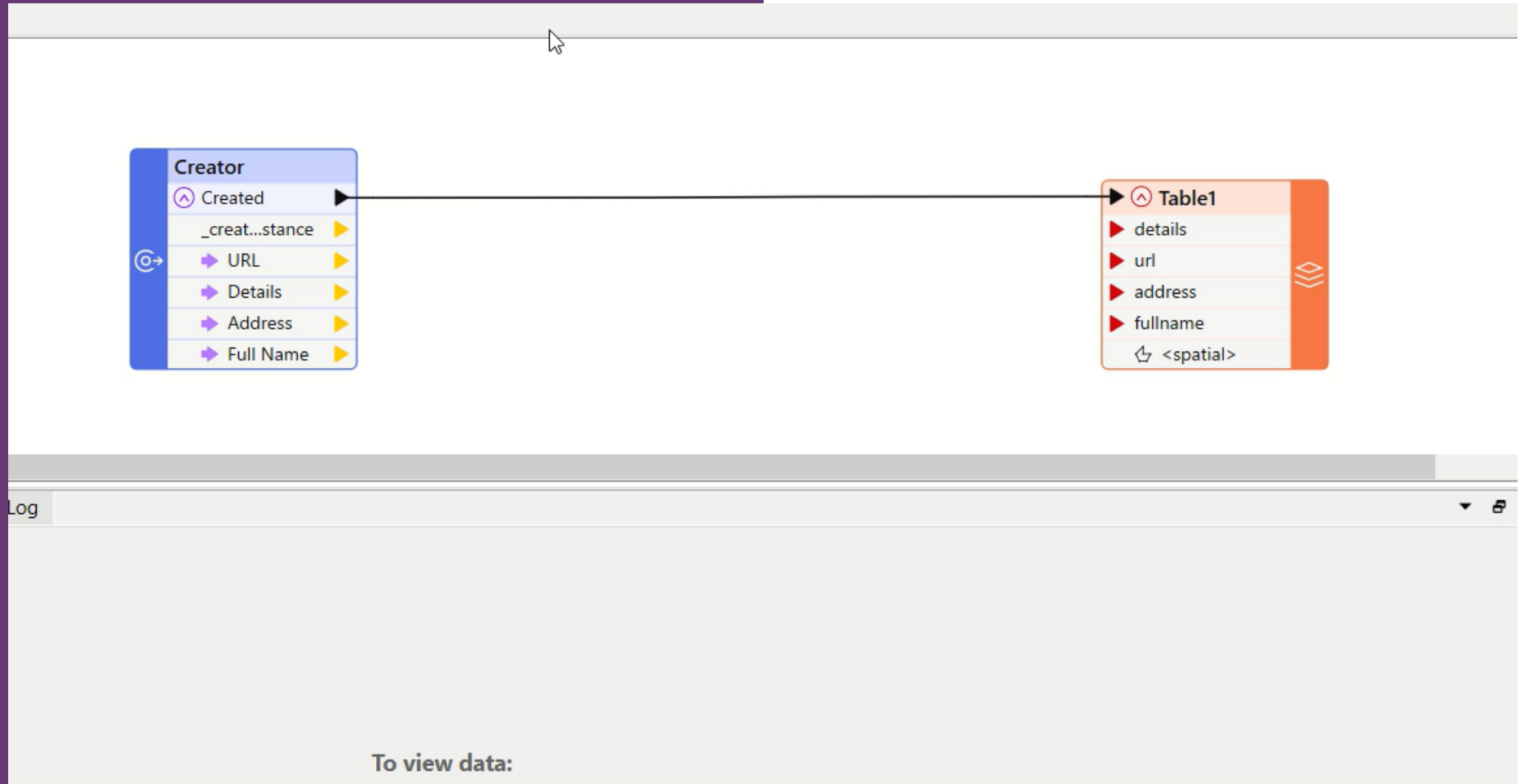


The screenshot shows the 'FilenamePartExtractor Parameters' dialog box. It has a title bar with a close button. The 'Transformer Name' field is set to 'FilenamePartExtractor'. The 'Source File' section has a 'Source Filename' field with a dropdown menu showing 'URL'. The 'Output Attribute Names' section has five fields: 'Folder Path' (set to '_dirpath'), 'Full Filename' (set to '_filename'), 'Root Filename' (set to '_rootname'), 'Filename Extension' (set to '_extension'), and 'Folder Name' (set to '_dirname'). At the bottom, there are buttons for 'Help', 'Presets' (with a dropdown arrow), 'OK', and 'Cancel'.

_dirpath	_filename	_rootname	_extension	_dirname
fme.abley.com\ArcGIS\	CurrentLicenceUse.docx	CurrentLicenceUse	docx	ArcGIS

Auto Connect

- FME ain't stupid



Auckland

Level 1/70 Shortland Street
Auckland 1010
Aotearoa New Zealand

Wellington

Level 1/119-123 Featherston Street
Wellington 6011
Aotearoa New Zealand

Christchurch

Level 1/137 Victoria Street
PO Box 36446, Merivale
Christchurch 8146
Aotearoa New Zealand

hello@abley.com

+64 3 377 4703

abley.com