



Locus FME Utility Meet-Up ArcGIS Utility Network

19 March 2025
Aaron Sapsford



Platform Capabilities



Enabling capability for Enterprise

Utility Network Management



Framework to enable Solutions

Analyse And Report On Your Data

A Comprehensive Location-Based System



Using Location to Support Business Imperatives



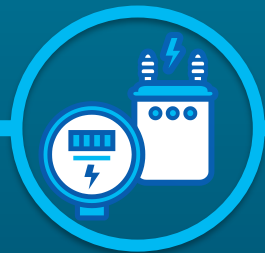
Asset Development

- Planning
- Engineering
- Design
- Construction



Asset Management

- GIS
- Inventory
- Condition
- Renewal



Network Operations

- Network Control
- Integrity Mgmt
- Risk Analysis



Asset Operations

- Monitoring
- Inspection
- Maintenance
- Emergency Management



Health, Safety & Environment

- Health & Safety
- Environmental Management



Business Management

- Business Intelligence
- Budgeting
- Human Resources
- Legal



Customers & Regulators

- Community Engagement
- Regulatory Compliance

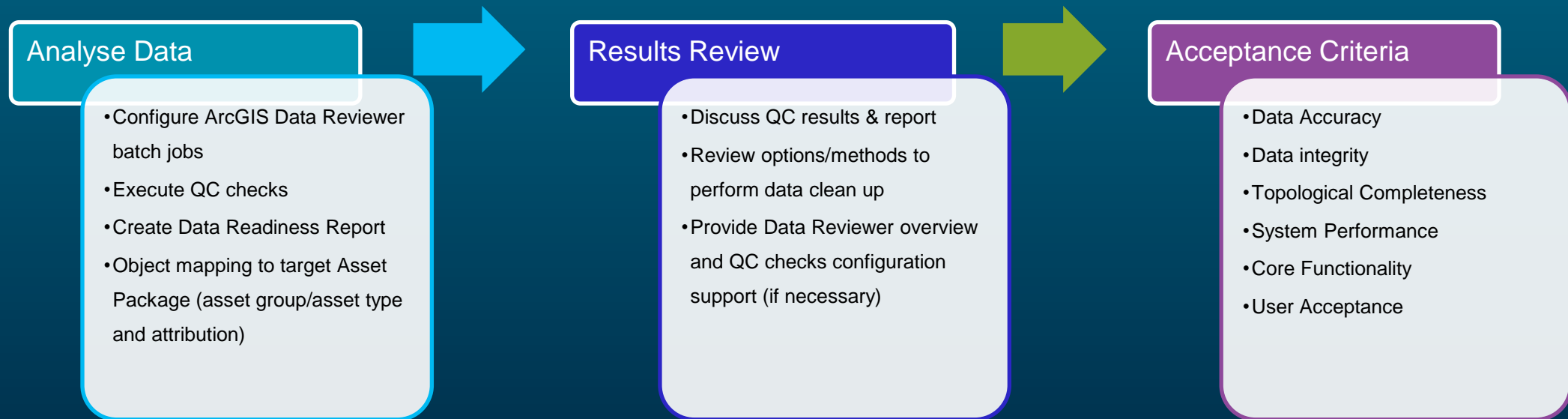
Data Readiness

Analyse → Validate → Report

When implementing a Utility Network System with pre-existing data, data issues may be exposed. Particularly when it comes from a non-Esri based system.

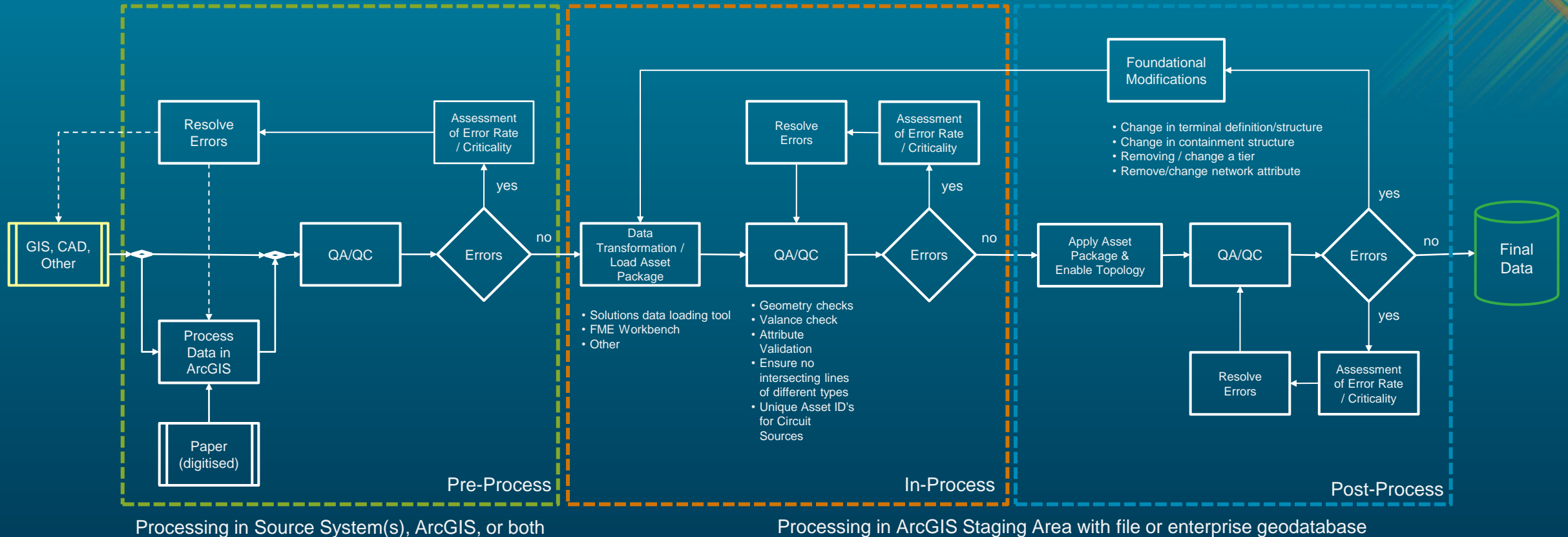
- Differing models (data structure and how connectivity between features is maintained)
- Differences in representations (detail views, layout)
- Missing information (incomplete data, in other systems)

Key is to identify any gaps and inconsistencies that **MUST** be addressed to reduce the risk of any issues being introduced when migrating



Data Readiness

Mitigate → Remediate → Migrate



Goals:

1. Develop data suitable to exercise and test workflow scenarios and use cases
2. Assess source data, e.g., completeness, consistency, connectivity
3. Develop and document the data pipeline and error resolution processes
4. Finalise schema, attribute rules, and network rules

Logical / Repeatable / Efficient



EAGLE
TECHNOLOGY



esri Official
Distributor