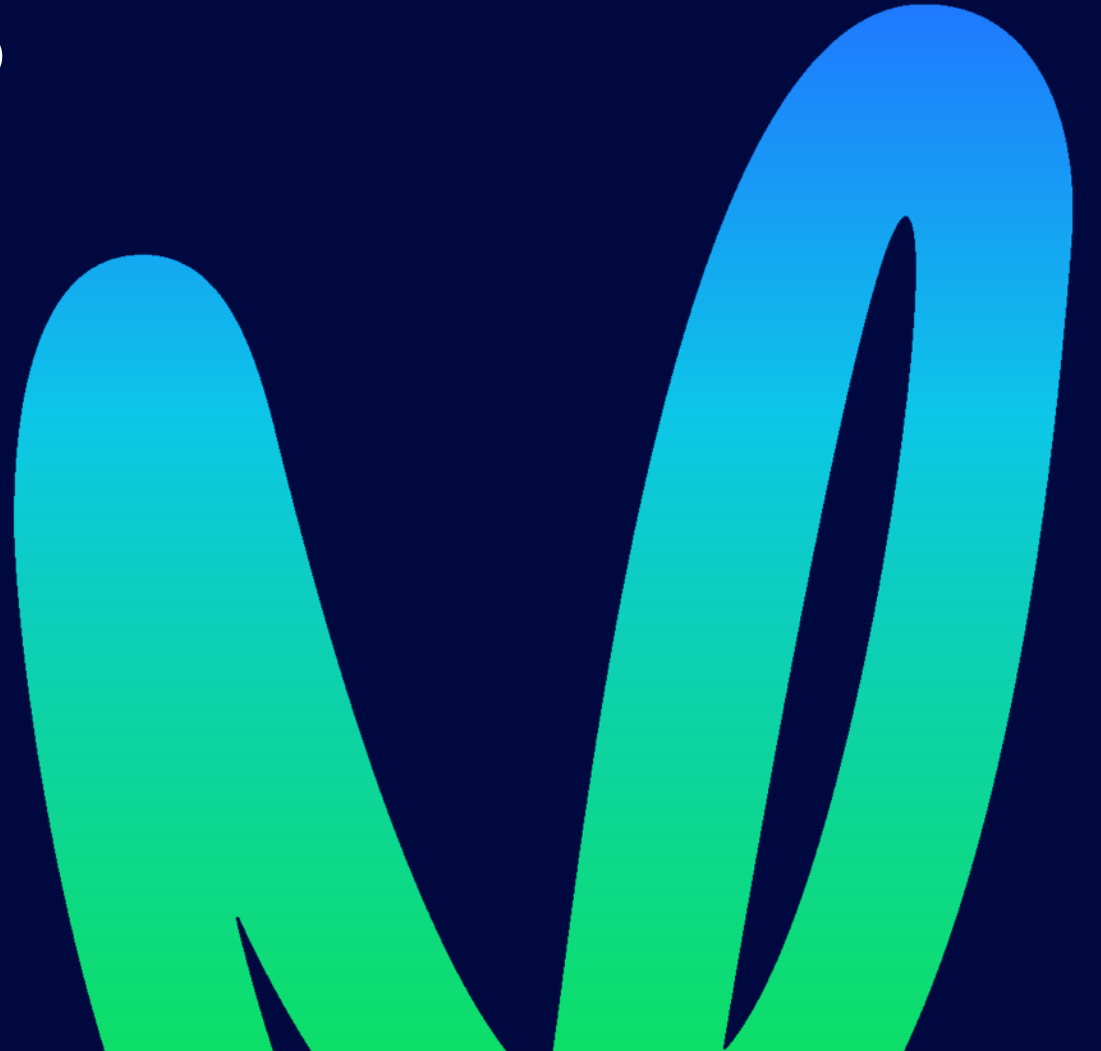


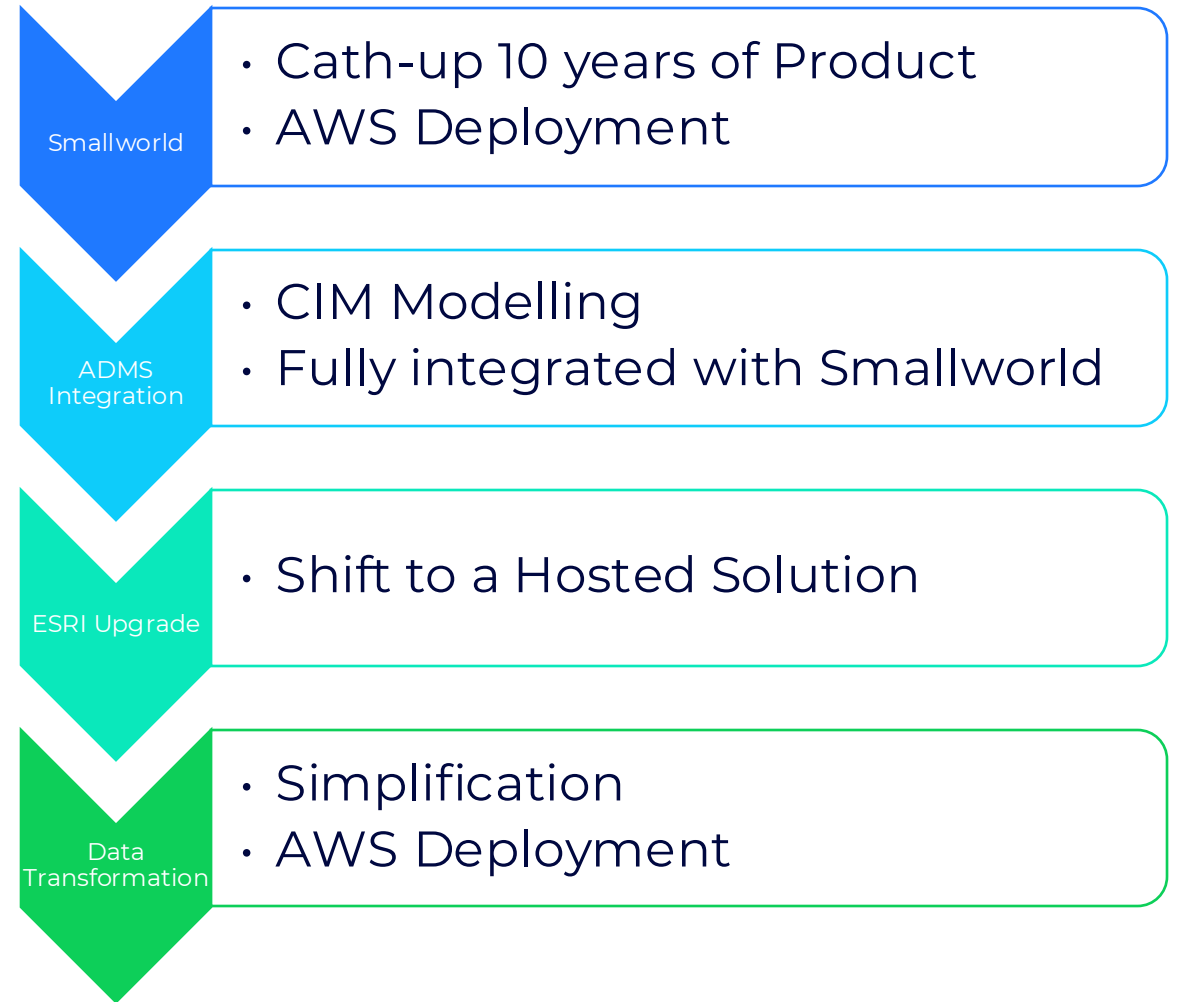
Locus FME Utility Meet-Up 18 September 2024

Vectors' Journey with FME



Platform Modernisation Program

- Data Driven Strategy across Vector
- Platform Modernisation initiated in 2020
- ADMS Drove the need
- GIS Upgraded and Shifted to run completely on AWS
- Data Transformation Modernisation, including shifting FME into AWS.



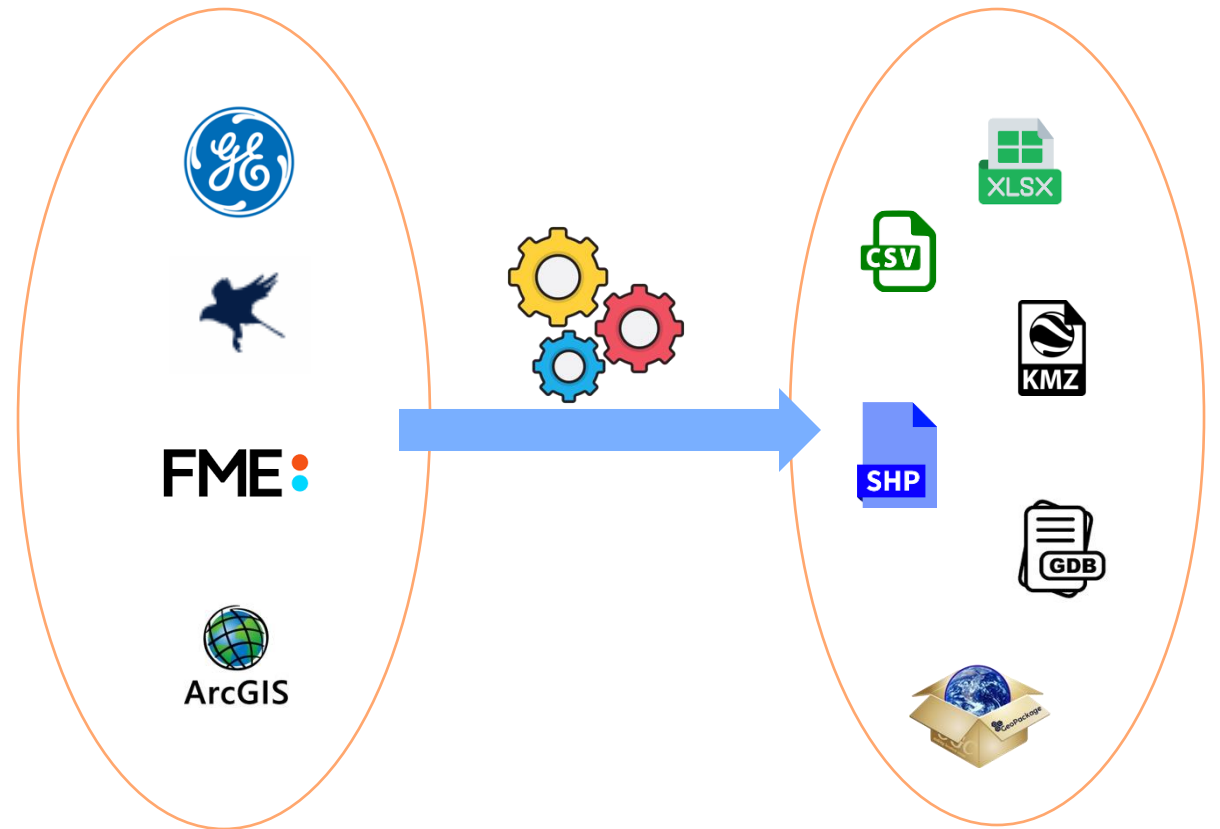
Vectors GIS Platform Applications

Key GIS Applications:

- A. Smallworld
- B. ArcGIS
- C. Geospatial Analysis (GSA)
- D. FME

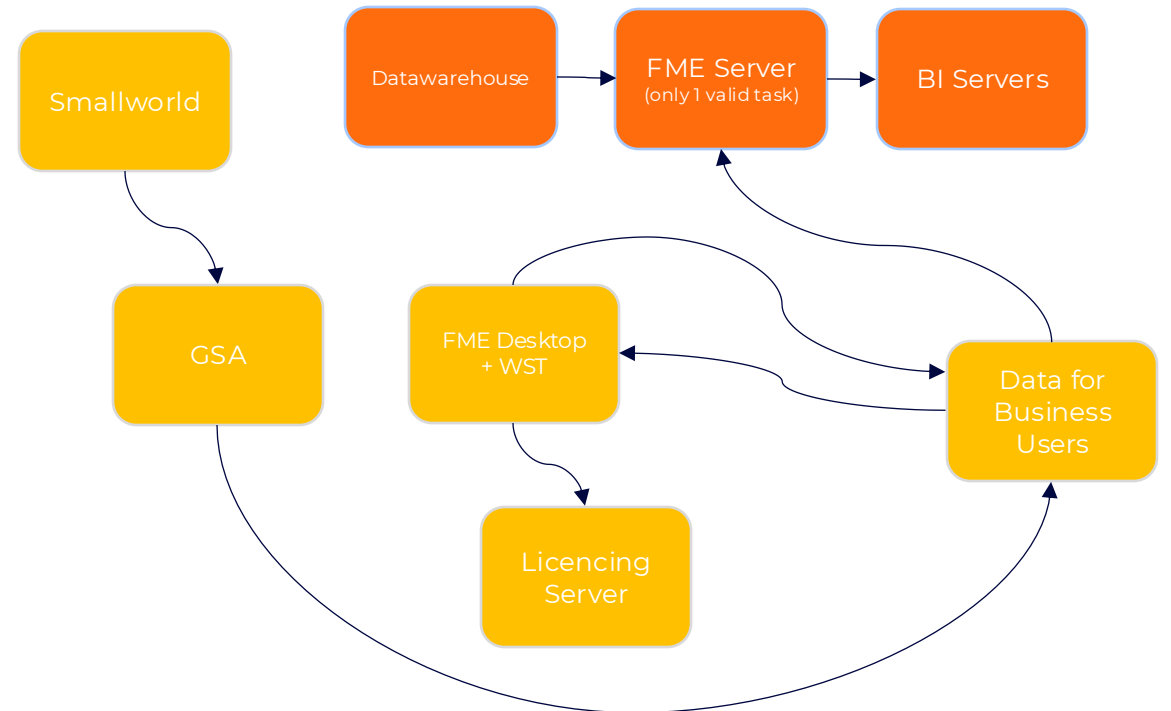
Key Outputs include:

- A. CSV/Excel
- B. Shape
- C. GeoPackage
- D. GeoDB
- E. BI Warehouse



Data Transformation – Where We Started

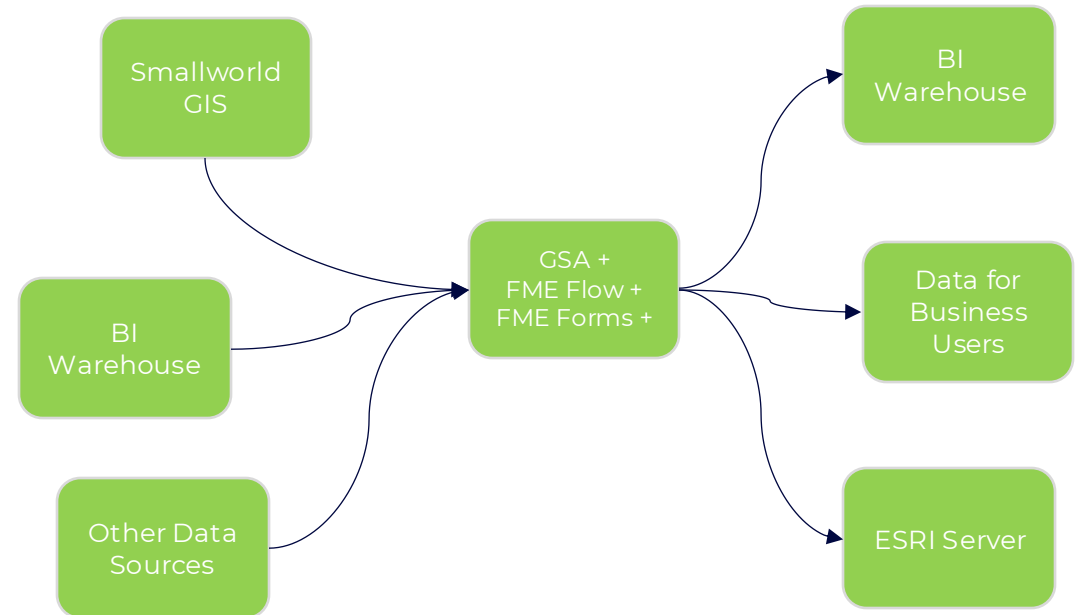
- Review all Transformation Processes
- Mapping enterprise data processing flow ([diagram](#))
- FME Server – On-Premise
- FME Desktop was scheduled to run processes



Data Transformation Modernisation

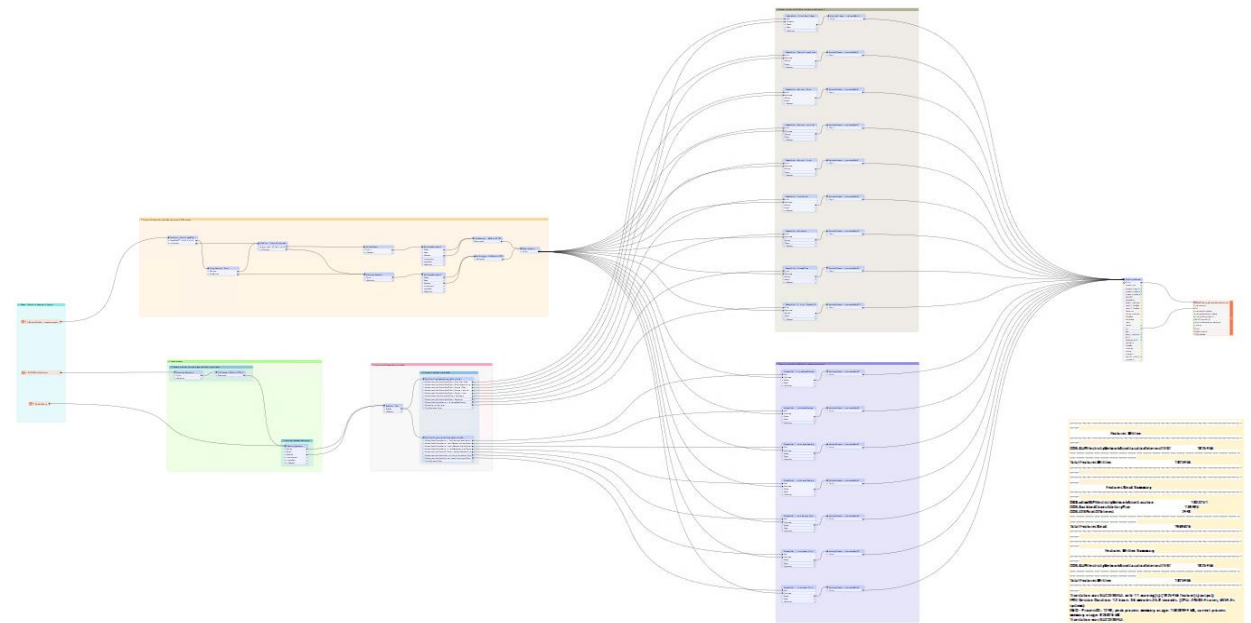
Aim of Modernising the Data Transformation processes:

- Upgrade FME
- Simplification / Consolidation
- TCO Reduction
- Easier to Manage and Extend
- Hosted in AWS



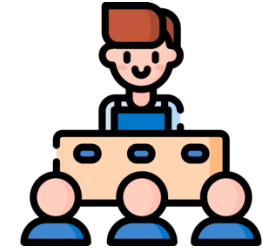
Data Transformation Modernisation

- FME FLOW 2024.0.3
 - Now Runs all Scheduled processing
- FME Form 2024.0.3
 - FME Workbenches Updated
- Migrated all FME to AWS
 - Pipelines used to deploy FME Windows EC2 Server



Future Uses of FME

- Education the wider Vector business of its Capabilities



- Right Tool for the Job



- Standardisation & Establish Best Practices

