

HURUNUI'S LONG TERM PLAN PROJECTS MAP

TRANSPARENCY MADE (PRETTY) EASY

FME CHRISTCHURCH CONFERENCE, 31 MAY 2023



The Request

“Interactive map please Chris...

...showing our Long Term Plan (LTP)
projects, with status and budget info etc...

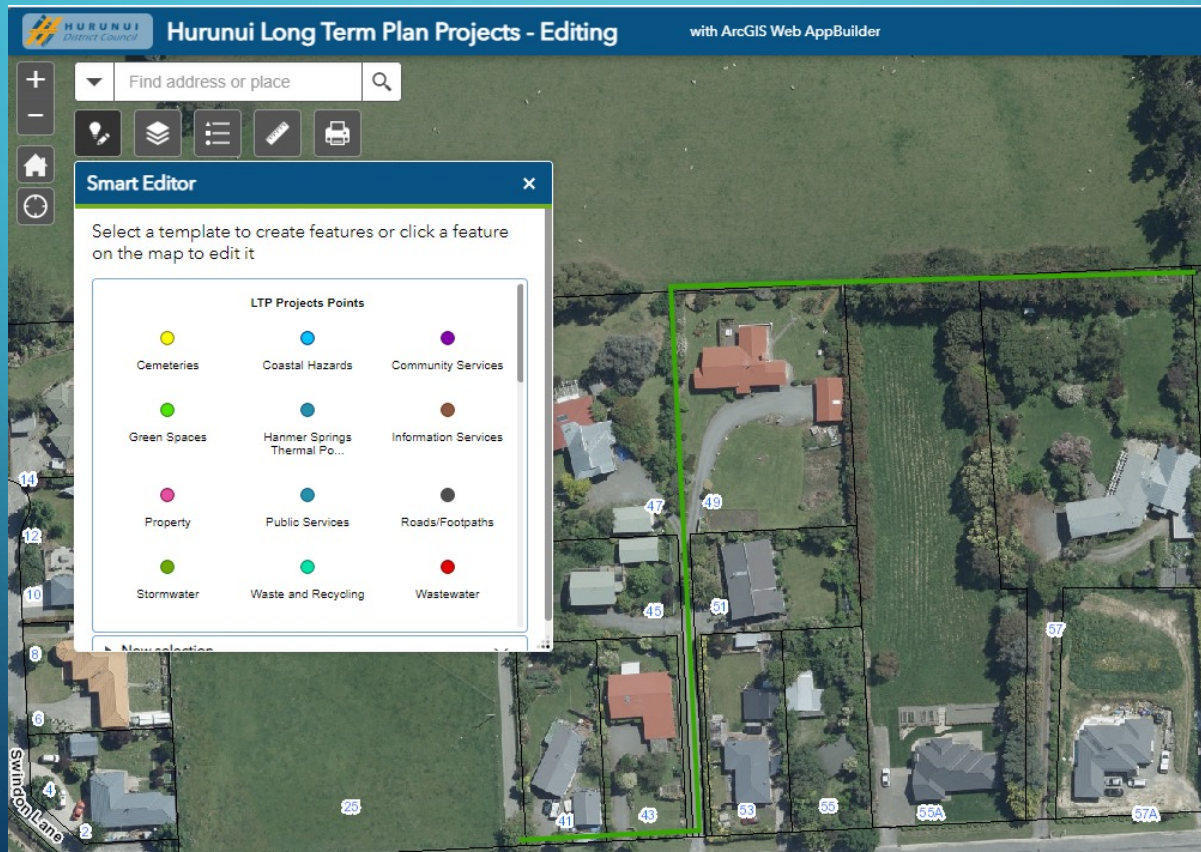
...colour-coded...

...for the public.

P.S. Please make it easy to update”

The AGOL Part (part I)

1. Hosted feature layer published
2. Projects team create and edit via smart editor



The AGOL Part (part 2)

Projects are filtered by status and readiness for viewing, into 2 public views – current and completed

<

Filter

LTP Projects Points

Remove filter

Filter results match the following expression.

Set

...

Match all conditions

×

Project Status

is

Completed

And

×

Public View

is

Yes



<input type="checkbox"/>	LTP Projects Public Completed			Feature layer (hosted, view) ▼
<input type="checkbox"/>	LTP Projects Public Current			Feature layer (hosted, view) ▼

The FME **Workbench** Form and **Server** Flow Part (Part I)

Projects team populates spreadsheet with clear instructions and data validation:

The screenshot displays the Microsoft Excel interface for a file named "LTP Projects 2022-23 CAPEX - Map Template - Mar 23.xlsx". The ribbon is set to "Home", and the active cell is B6, which contains the text "Ramp for Amberley Office".

Below the ribbon, a red warning banner spans the top of the spreadsheet, stating: "Do not change the layout of this sheet, only the data from row 6 and below - the LTP projects map update depends on this. Also data".

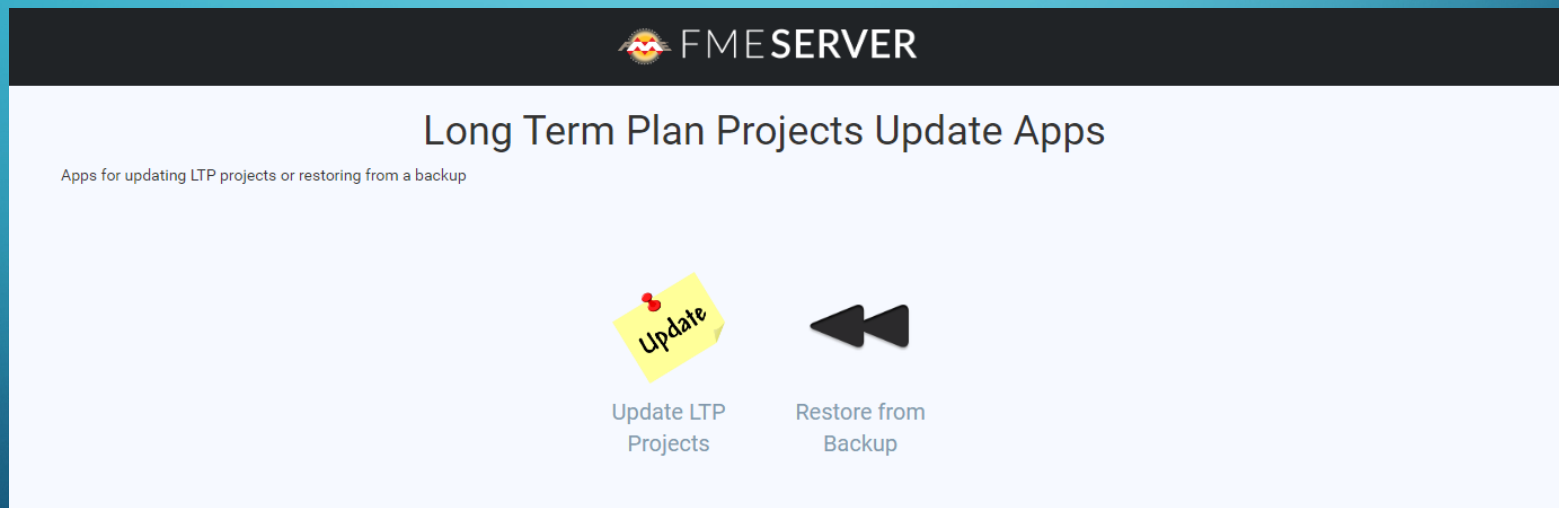
The spreadsheet content is as follows:

	A	B	C
1	Do not change the layout of this sheet, only the data from row 6 and below - the LTP projects map update depends on this. Also data		
2	Hurunui District Council 2022/23 Capital Works Programme		
3	Project Tracker		
4	For Period 22/23 - October 2022		
5	Project ID	Project Name	Project Location
6	AMBOFF2102	Ramp for Amberley Office	66 Carters Road, Amberely
7	CEMET2201	Berm construction	304 Jollies Pass Road, Hanmer Springs, 21 Davison Road, Rotherham
	EQBLDGS	Earthquake Prone Buildings	2 Johnston Street, Waipara

A data validation error box is visible over cell B7, indicating: "Project Name Max 100 characters, min 1".

The FME **Workbench** Form and **Server** Flow Part (Part 2)

Gallery app provided (login required) to **easily run an update** and an optional backup restore in case of issues



The FME **Workbench** Form and **Server** Flow Part (Part 3)



Update LTP Projects


Only run this app once, if it fails either run the restore from backup app or contact the GIS Officer

Upload a spreadsheet with LTP project updates as per the agreed template, using the Programme for Map tab. Drag and drop the spreadsheet and click OK to run the process.

Source Microsoft Excel File(s)

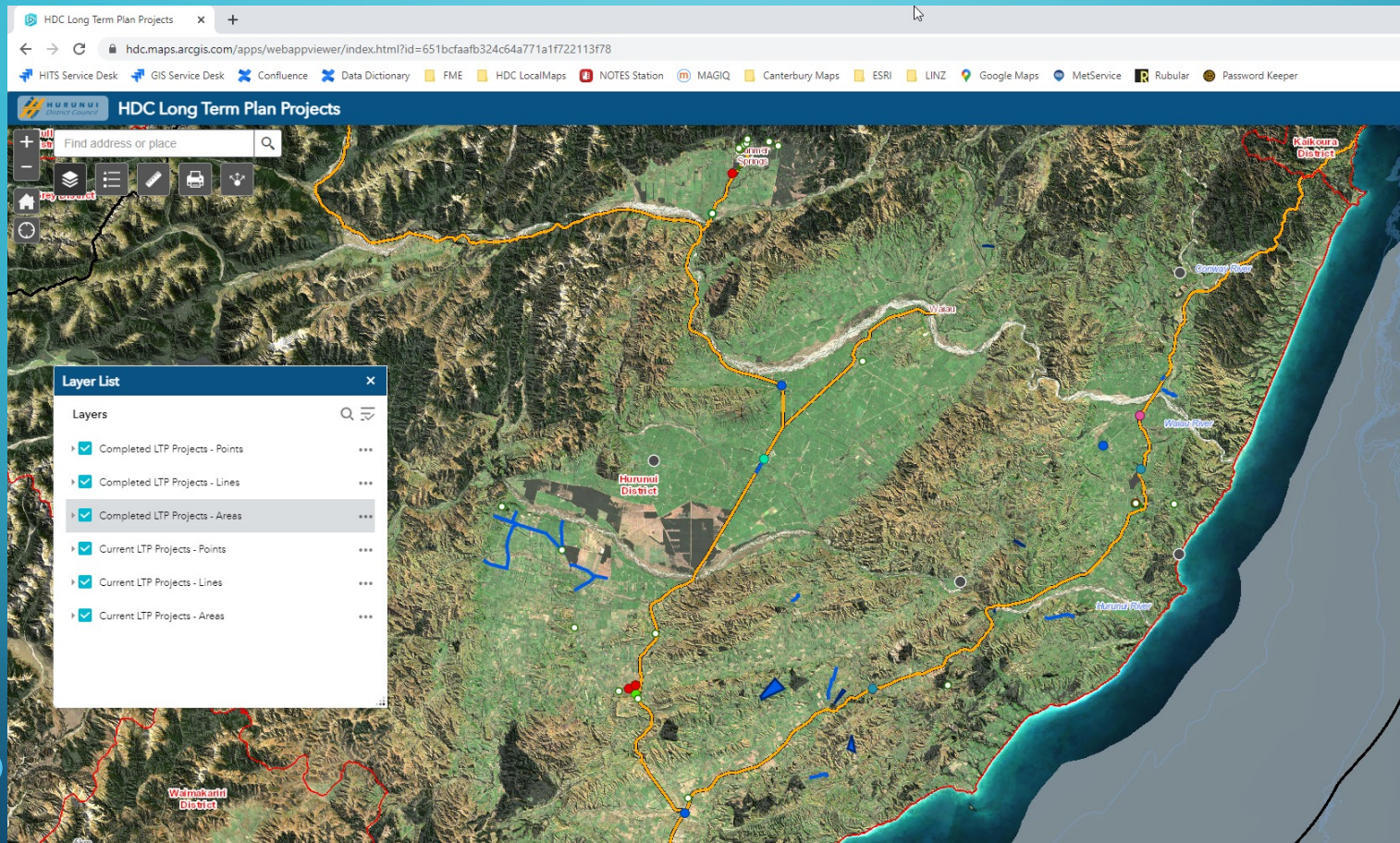
 Browse Resources

OR

 Upload File

OK

The Outcome



HDC Long Term Plan Projects Interactive Map

The background is a solid blue gradient. In the four corners, there are decorative white line art elements resembling circuit boards or neural networks, with lines and small circles connecting them.

Thank You – Questions?

Chris.Wilson@hurunui.govt.nz
gis@hurunui.govt.nz