

FME:

FME:23 Highlights



What's new?

- Did we mention the rebrand?



FME Form

- Workspace Collaboration
- Transformer Designer
- Data Visualisation Optimised
- UPSERT Support
- SQLCreator/Executor for Geodatabases
- Attribute Manager Parameters



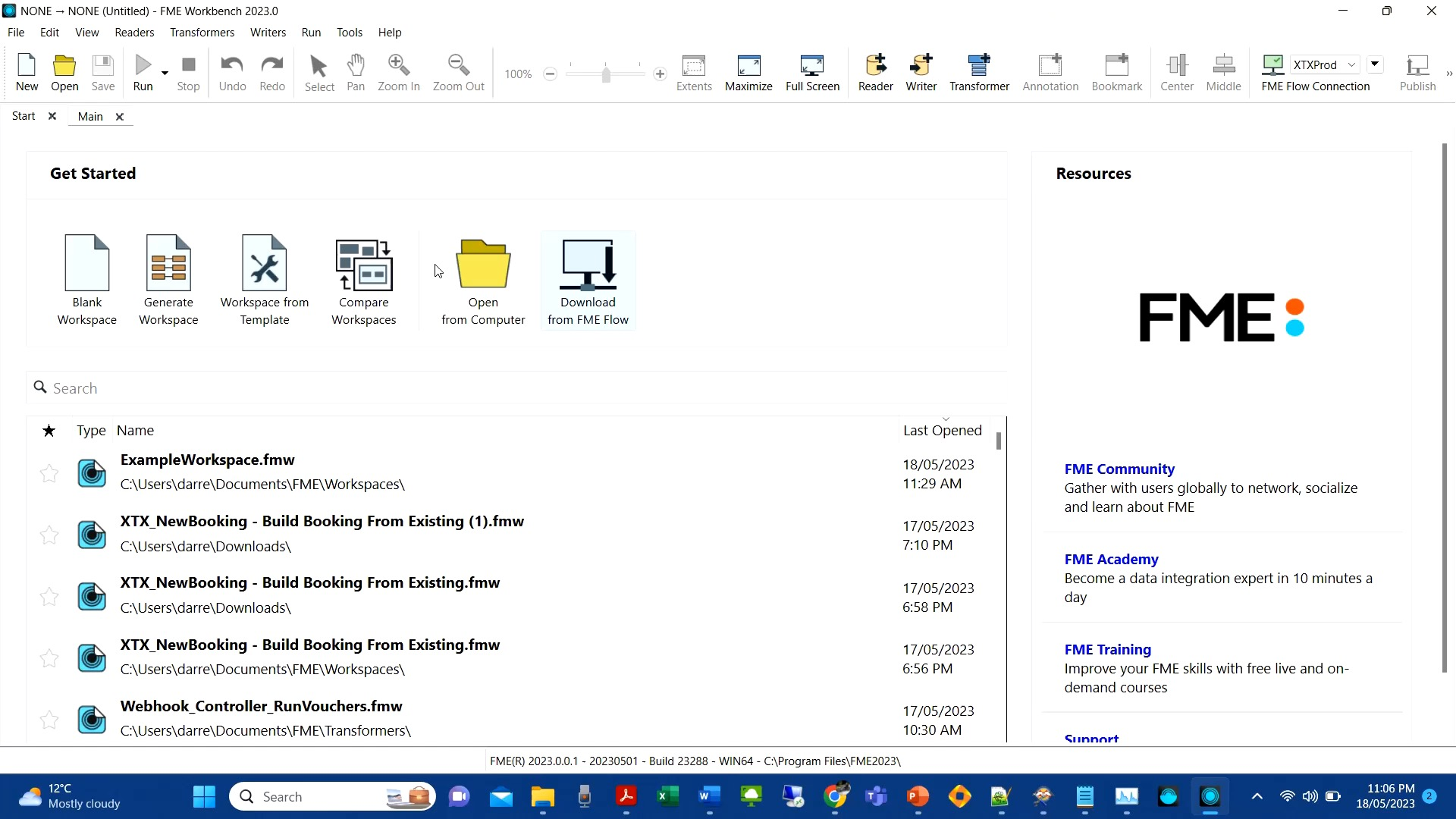


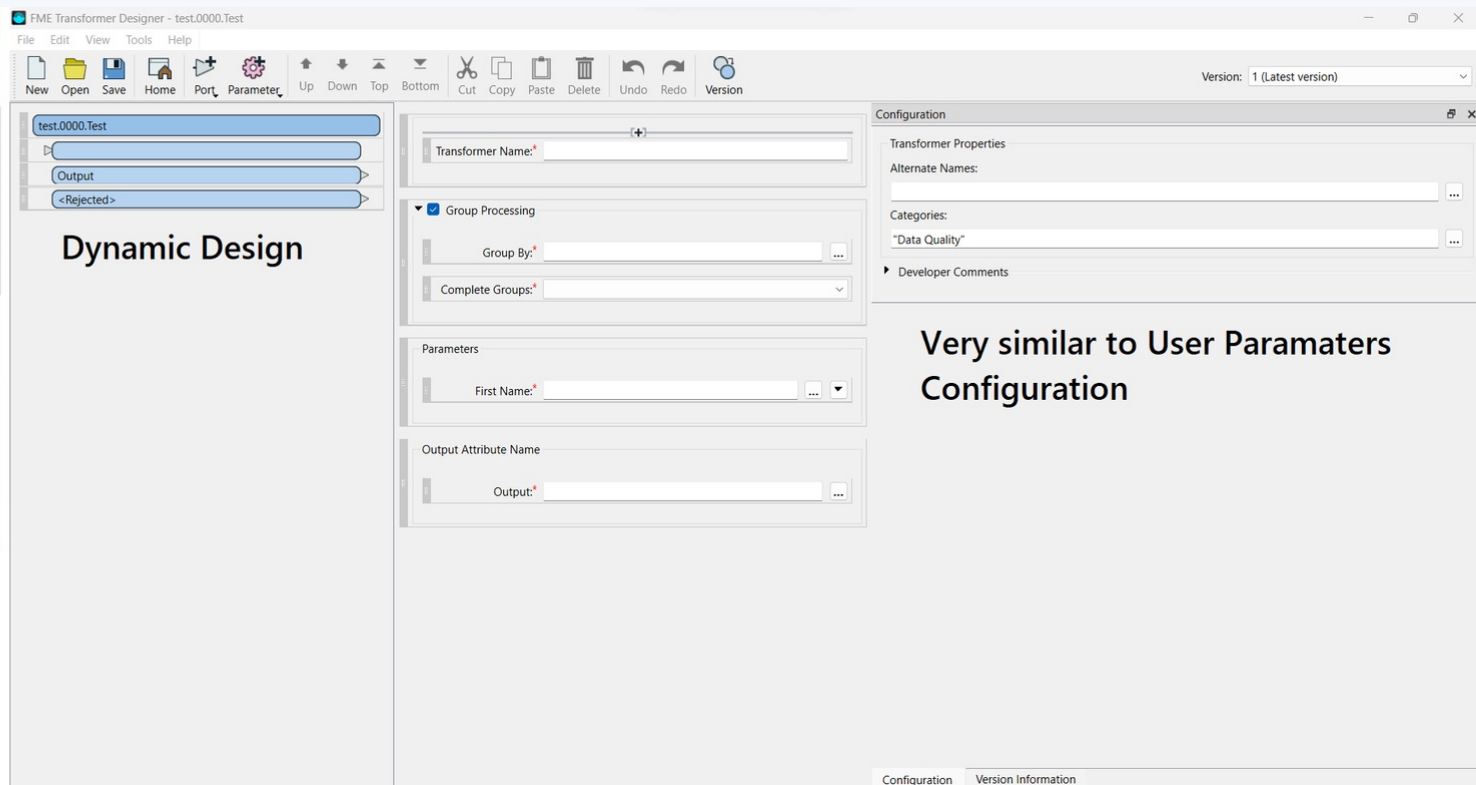
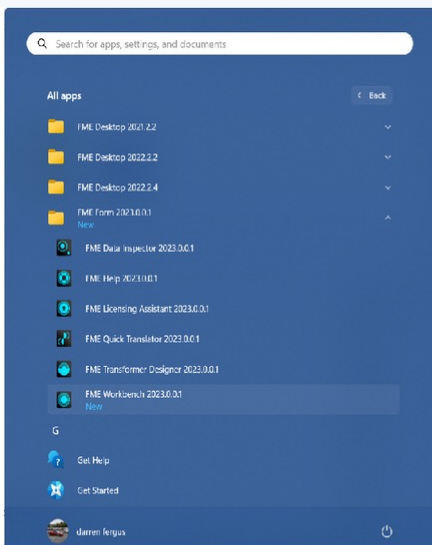
Comparison

Workspace ~~Collaboration~~

- At this stage Workspace Collaboration is probably better named Workspace Comparison
- Helps you compare two workspaces
 - Identifies differences
 - Update workspace (right to left)
- Great for compairing historic workspaces
- Great for comparing different environments







Dynamic Design

Very similar to User Parameters Configuration



Data Visualisation Optimised

Issues:

- Slow and laggy performance in data visualization, especially with large datasets.
- Performance issues observed in both 2D and non-spatial data visualization in the visual preview.
- The Data Inspector also suffered from slow performance.

Achievements:

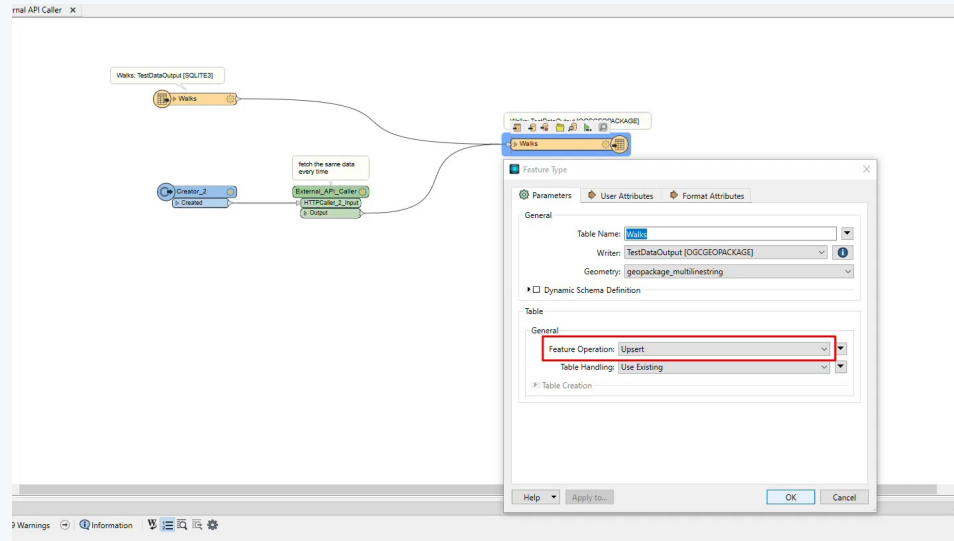
- Non-spatial data visualization (with or without a background map) improved by approximately 50% (1.5x faster) between 2022 and 2023.
- Spatial data visualization became approximately 130% faster (2x to 2.5x faster) compared to before.
- These improvements are averaged results, and individual datasets may vary in terms of performance.



LOCUS

UPSERT Support

- Being added to more and more formats
- 2023: GeoPackage
- Simplify change detection logic in your workspaces



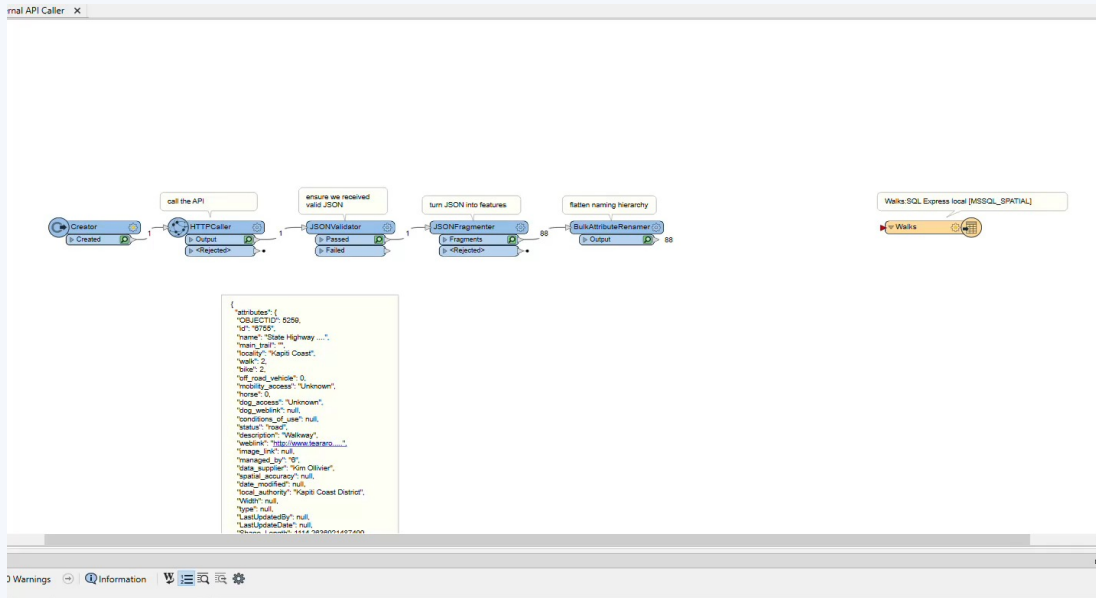


SQLCreator/Executor for Geodatabases

- Run complex SQL queries through an Esri lens
- Offload some of the heavy lifting to the DB
- Reduce workspace complexity and execution time



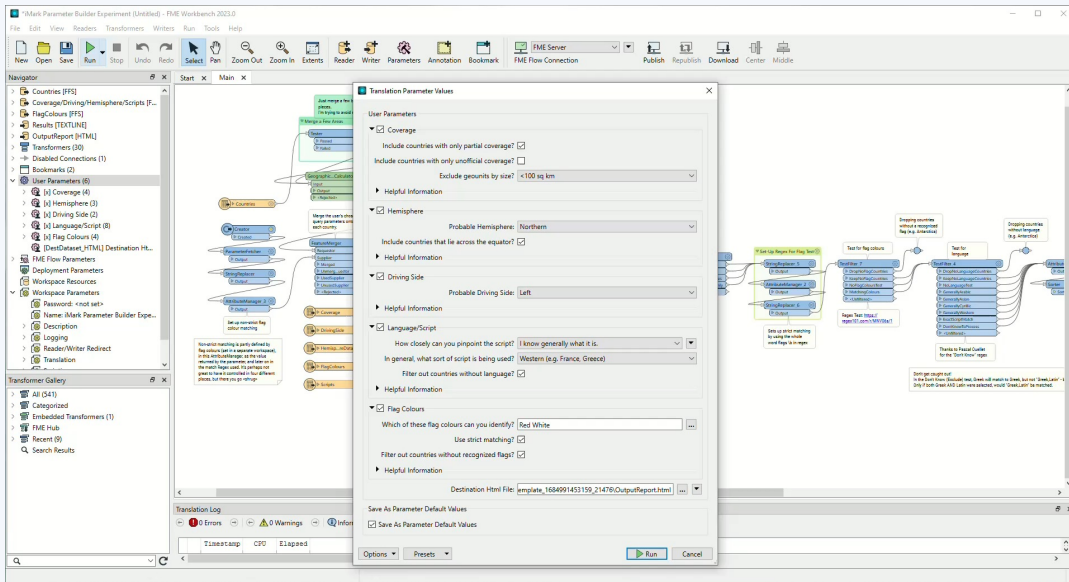
- Improved Authoring Experience
 - Datatype assignment in AttributeManager and Attribute Creator
 - Very popular transformers among users
 - Sets up streamlined Automatic workflows





Conditional Parameters

- Conditional Configuration of User parameters
- Customisable interactive forms
- Expose or hide groups and/or parameters based on other parameter values





What else is new?

- New Databricks Reader and Writer
- ArcGIS Server Feature Service Writer
- Microsoft Azure Synapse SQL Reader & Writer
- ND JSON & GeoJSON Reader & Writer
- Airtable Reader & Writer
- Precisely MRR Writer





FME Flow

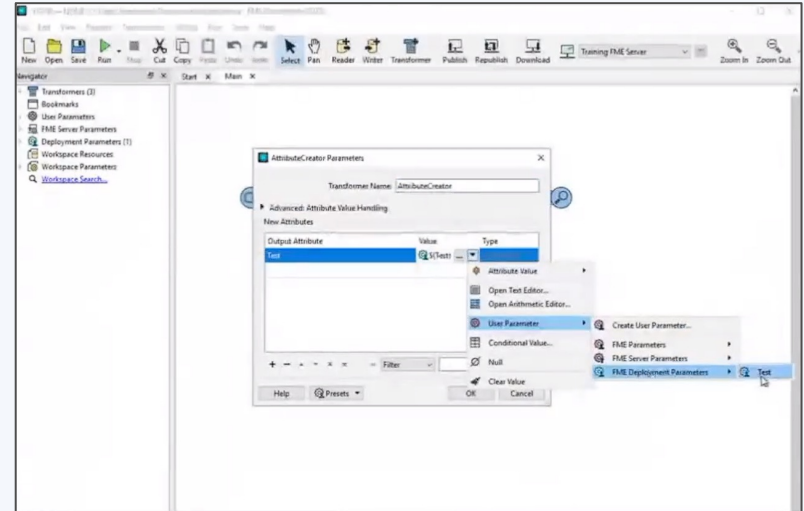
- Deployment Parameters
- Distributed Processing Fabric
- Improved Webhook Triggers





Deployment Parameters

- Simple workspace reuse across multiple server environments
- Maintain and standardize FME Platform configuration in one place
- Apply to different environments
 - Test
 - Development
 - Production
- Moving towards a Dev-ops environment
- Creating tighter integration across the platform





Distributed Processing Fabric

- Deploy secure, hybrid , and multi-cloud data integration workflows
- Remote Engine Service
- Deploy a Remote Engine close to where data resides
 - Efficient
 - Secure
 - Cost Effective

The screenshot displays the FMSERVER web interface. On the left is a dark blue sidebar with a menu. The main content area is titled 'Engine Management' and shows a breadcrumb trail: 'Engines > Queues > Job Routing Rules > Engine Assignment Rules > Active Periods > Deployment Status > Remote Engines'. Below this is a sub-breadcrumb 'Remote Engines > Create'. The 'Create Remote Engine' form contains the following fields:

- Name:** A text input field containing 'AWSEngine'.
- URL:** A text input field containing 'http://52.000.1.000'.
- Username:** A text input field containing 'admin'.
- Password:** A password input field with masked characters '*****' and a toggle icon.
- Queues:** A dropdown menu with 'AWS' selected.

At the bottom right of the form are three buttons: 'Cancel', 'Test', and 'OK'.



Improved Webhook Triggers

- Increased control of webhook triggers
- Automations with built-in authentication support

Locus Recommends



Connect with Locus



FME:

Thank you!

www.locusglobal.com

