

FME:

AI-The Good the Bad and the FME



We are all going to be replaced by AI!?

- Pick a subject?
- Pick a presentation duration? – 1-5 Minutes
- Pick the number of slides? – 1 to 6
- Pick an emotion? – Funny, Scary Sad, Happy, Serious, etc
- Off we go...

Artificial Intelligence Defined

- Instead, let's ask AI, surely it should know?
- **Chris** - "Define AI in 15 words exactly"
- **ChatGPT** - *"AI is the development of computer systems that simulate human intelligence and perform intelligent tasks."*
- **Bing AI** – *"Artificial Intelligence (AI) is the ability of machines to perform tasks that typically require human intelligence."*
- **Google Bard** - *"Artificial intelligence is the simulation of human intelligence in machines."*
- **Chris** - *"But that's only 10 words?"*
- **Google Bard** - *"You are right. Here is a definition of AI in 15 words exactly"*
- *"The simulation of human intelligence in machines that are able to learn and act autonomously."*
- **Chris** – *"Thanks buddy"*
- So, what is Machine Learning?

Artificial Intelligence

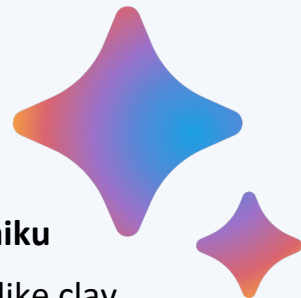
- There are many consumer systems out there, some are generic, others are very specific.
 - ChatGPT – Google Bard – Bing AI
 - AutoGPT
- Image Generation
 - Dall-E-2
 - Midjourney
 - Lots of others
- Others will become part of our working lives
 - Microsoft 365 Copilot



FME and AI

- OpenAI ChatGPT Connector
- OpenAI Completions Connector
- OpenAI Image Generator

- HTTP Caller
 - Google Bard
- Use AI to write a workspace



FME Haiku

Data is like clay

Mold it, shape it, transform it

Create something new

Form and Flow are one

Data is transformed, like clay

A new shape is born

Industry 4.0

- Industry 4.0 refers to the fourth industrial revolution, characterized by the integration of advanced technologies and digitalization into various industrial sectors
- The key features of Industry 4.0 include the following:
 - Internet of Things (IoT)
 - Big Data and Analytics
 - Artificial Intelligence (AI)
 - Automation and Robotics
 - Cloud Computing

FME & IoT

- Azure IoT Connector
- Google IoT Core Connector
- AWS IoT Connector
- IBM IoT Connector
- MQTT Connector
- Kafka Apache



Electra

- Electra have developed an IoT device called the Phase Loss Sensor
- When the voltage drops below a certain threshold, it triggers a signal that travels via FME and onto the outage management system
- FME then identifies the fault on the network and predicts the downstream customer(s) impacted by the fault

Connect with Locus



FME:

Thank you!

www.locusglobal.com

