



## FME Desktop Floating Licence Installation Instructions

### Installation a Floating Licence on Windows

#### 1. Before You Begin

Ensure that the following requirements are met before beginning the installation

- You must be running a TCP/IP network
- One computer on the network is designated as the licence server. The licence server may be any computer on the network that is visible to all computers that are dependent on it for their licences. You should choose a computer that is always running and connected to the network. The client computer must be able to communicate with the licence server to use FME. The processing burden on the licensing server is negligible
- You must have Administrator privileges to install the FME Floating Licence server
- If the computer you want to use as your floating licence server has a firewall, you must open a port through which the FlexServer can communicate. By default, the range of ports used is 27000-27009, although you can also configure other ports. For more information refer to – [Specifying Floating Licence Server Ports](#)
- If FlexNet is already installed on your licence server, you still need to perform a new installation. FME requires the version of FlexNet that is included in the installer. In addition, if your organisation is configuring licence borrowing (see [Borrowing a Floating Licence](#) you will require LMTOOLS version 11.8 or newer

The FME licence server cannot be installed on a virtual machine that is built and moved around among many physical machines. It must be locked to a single fixed MAC address

#### 2. Download and Run the Installer

The FME installer contains the utility program required to get the licence server up and running:

- Fme-flexnet-win-x86.msi (Windows 32 bit) or
- Fme-flexnet-win-x64.msi (Windows 64 bit)

Download the installer from Safe Software's site /  
<https://www.safe.com/support/downloads/>

On the computer that acts as the licence server, run (double-click) the installer to create a FlexServer directory

The following table lists the shortcuts that are created in the Safe Software program group.

Shortcut	Description
Generate hostid.txt	Creates a text file that contains the hostname and Host ID information required when requesting a floating license from <a href="http://www.safe.com/activation/floating/">www.safe.com/activation/floating/</a>
Launch LMTOOLS	Launches LMTOOLS. Used for debugging or changing configuration.
License Administration Guide	Opens Flexera Software's License Administration Guide.
Start - Restart FME License Server	Starts the license manager process.
View FME License Server Log	Opens the license manager log file. Used for debugging.
View hostid.txt	Reopens text file, if required by Safe Software.
View Readme	Opens the installation and configuration instructions.

### 3. Request and Install the Licence

Perform the following steps on the computer that acts as the licence server:

- Click Start > Programs > FlexNet for Safe Software > View hostid.txt to open the hostid.txt file. If you are installing FlexNet on Windows Vista, Windows 7 or Windows 8 and User Account Control (UAC) is enabled, right click Start-Restart FME License Server and run this function using administrator privlidges. If UAC is not enabled, you do not have to perform this step
- Send your hostid.txt file to [support@locus.co.nz](mailto:support@locus.co.nz) to request a license file
- Locus will then email you licence installation instructions:
  - Save the safe.lic file to the FlexServer directory. For example: C:\Program Files\FlexServer\
  - Restart the FME Licence Server:
    - Start Menu > Programs > FlexNet for Safe Software > Start – Restart FME Licence Server
- **Install FME Server on Client Computers**

After the licence server is running, install FME on the client computers on the Network Server (if you have a fast and non-congested network)

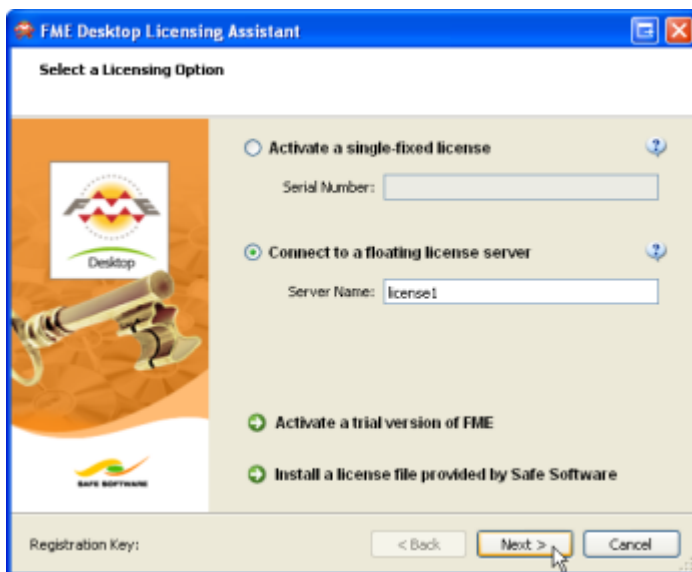
If this is a licence upgrade from fixed licence to floating licence (and not a new FME installation) then ensure that there are no existing fme\_license.dat files in the licences directory and no FME tasks running before starting the registration process.

- **Start FME Registration**

Perform this step for each computer that has FME installed

For command prompt instructions, see [Licensing FME Desktop from the Windows Command Prompt](#).

- Open the FME Licencing Assistant: Start > Programs > FME Desktop > Utilities > FME Licensing Assistant



- Select Connect to a floating licence server and enter the name of the computer that is hosting the FME licences
- Click the Next button
- If your configuration contains more than one type of FME license, select the license that you want to use
- Click Finish to complete the connection

Issued: April 2021